

Single Phase - Short Circuit Withstanding Rating

Withstand Rating (short circuit current)	208V to 240V - 1ph - 50/60Hz	
	Normal Power Section	Alternate Power Section
Standard	65,000 A	
Optional	n/a	

Three Phase - Short Circuit Withstanding Rating

Withstand Rating (short circuit current)	208V to 480V - 3ph - 50/60Hz		380 to 480V - 3ph - 60Hz		600V - 3ph - 60Hz	
	Normal Power Section	Alternate Power Section	Normal Power Section	Alternate Power Section	Normal Power Section	Alternate Power Section
Standard	65,000 A		25,000 A		18,000 A	
Optional	n/a		65,000 A		25,000 A	

HP / Voltage / Dimensions / Weights

208V to 240V - 1HP - 60hz	208V to 600V - 3HP - 60hz	GPL		GPL + GPU	
		Dimension in inches (mm)	Approx. Shipping Weight in Lbs (Kg)	Dimension in inches (mm)	Approx. Shipping Weight in Lbs (Kg)
HP Range (kW)					
5 - 15 (3.7 - 11)	5 - 30 (3.7 - 22)	20"w x 24"h x 8"d (508x 610 x 203)	100 (48)	40"w x 24"h x 8"d (1016 x 610 x 203)	250 (114)



Model GPL Limited Service Electric Pump Controller



Model GPL+GLU Limited Service Electric Pump Controller with Automatic Power Transfer Switch



Limitations

- Across the line starting only
- Horsepower rating of maximum 30hp
- Can only be installed where acceptable by the authority having jurisdiction
- Not accepted in FM insured property

Standard Features

- ViZiTouch operator interface
- NEMA 2 enclosure
- Available in single phase
- Pressure and event recorder
- Voltage and amperage display
- Rotary type main disconnect switch complete with door interlock
- Surge arrestor
- Wall mounting lugs
- Start and stop pushbuttons
- Circuit breaker (150% - 250% of FLC)
- Phase reversal indication
- Remote start / deluge valve start provision
- Pressure transducer
- Alarm contacts for remote indication
- Emergency manual start handle
- Available with automatic power transfer switch

Americas

Tornatech Inc.
Head Office
 7075, Pl. Robert-Joncas
 Suite # 132
 Montreal, Canada
 H4M 2Z2
 Tel.: + 1 514 334 0523
 + 1 800 363 8448
 Fax: + 1 514 334 5448

USA Sales Representatives
 Toll Free: + 1 800 363-8448
Cincinnati, Ohio
 Cell: + 1 513 307 6766
Birmingham, Alabama
 Cell: + 1 205 902 9331
Latin America Sales Representative
 Tel.: + 1 514 334 0523
 Cell: + 1 514 945 4067

Europe

Tornatech S.P.R.L.
 Avenue Sabin 3
 1300 Wavre
 Belgium
 Tel.: + 32 (0) 10 84 40 01
 Fax: + 32 (0) 10 24 75 05

Middle East

Tornatech FZE
 Warehouse RA08CC04
 Jebel Ali North
 PO Box 18435
 Dubai,
 United Arab Emirates
 Tel.: + 971 (0)4 887 0615
 Fax.: + 971 (0)4 887 0604

Asia

Tornatech Pte Ltd.
 3 Soon Lee Street #05-33
 Pioneer Junction
 Singapore 627606
 Tel.: + 65 6795 8114
 + 65 6795 7823
 Fax: + 65 6795 3201



• ViZiTouch operator interface



• USB Port exterior



• Emergency start



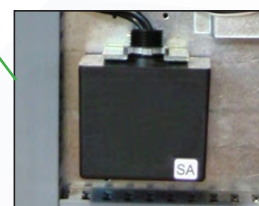
• Key lock



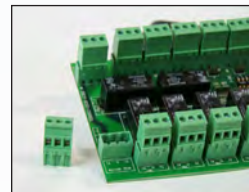
• Transfer switch



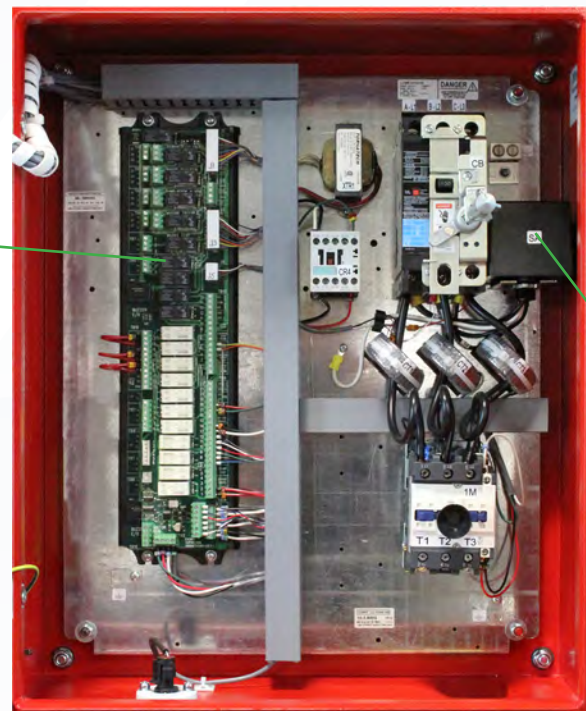
• USB Port interior



• Surge arrester

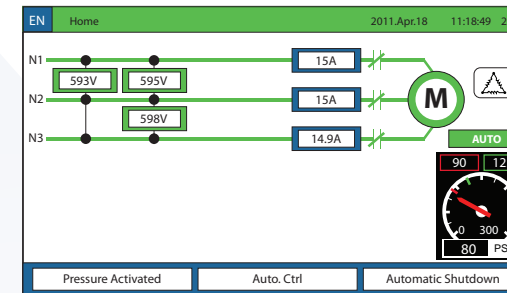


• Remote alarm contacts with removable terminals

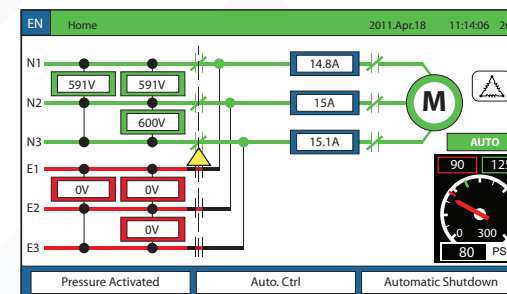


• Model GPL shown

Electric Pump Controller



Electric Pump Controller with Transfer Switch



Major features include:

- Embedded micro-computer with Linux O/S and software PLC
- Touch screen operation with 4.2" color display and intuitive graphics
- ARM processor
- Expandable storage
- Multi-language
- Upgradable software
- Password protected

Settings

History/Statistics

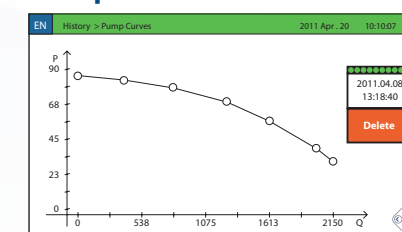
Since	On Time
2010.05.06 07:10:24	364.20.34
Motor	
Last Run	2011.05.04 08:15:46
Run Time	02.20.38
Start Count	52
Pressure	
Minimum	99.1
Maximum	117.3
Average	108.2
Generator	
Last Run	2011.05.04 07:12:48
Run Time	00.08.34
Transfer Count	26
Temperature	
Minimum	26.0
Maximum	24.0
Average	25.0

Events

#	Date	Time	Message
1	2011.07.22	14:18:20	User 9 Logger In
2	2011.07.22	13:59:27	Under Voltage OCCURED
3	2011.07.22	13:59:27	Under Voltage INACTIVE
4	2011.07.22	13:58:21	IO Exp1 Comm Error ACTIVE
5	2011.07.22	13:54:25	Alarms Resetted
6	2011.07.22	13:54:05	Alt. IS Tripped/Open OCCURED
7	2011.07.22	13:54:05	Control Voltage Returned
8	2011.07.22	13:54:05	User 9 Logger Off
9	2011.07.22	13:54:05	Alarms Resetted
10	2011.07.22	13:54:05	IO Tr.Sw. Comm Error OCCURED

Service

Pump Curves



Pressure Curves

